



# PROMOTIONS

*Valid from 1st January to 30th June, 2025*

**1st half  
2025**



# TINY M<sup>INI</sup> TURN MULTI

Valid from 1st January to 30th June, 2025



## SOLID CARBIDE BORING BAR FOR SMALL-DIAMETER DRILLING AND TURNING

Multifunctional solid carbide boring bar for small-diameter drilling and various turning processes

**BUY 4** solid carbide bars  
AND  
**GET 1** corresponding sleeve

**40 %**  
additional  
discount!

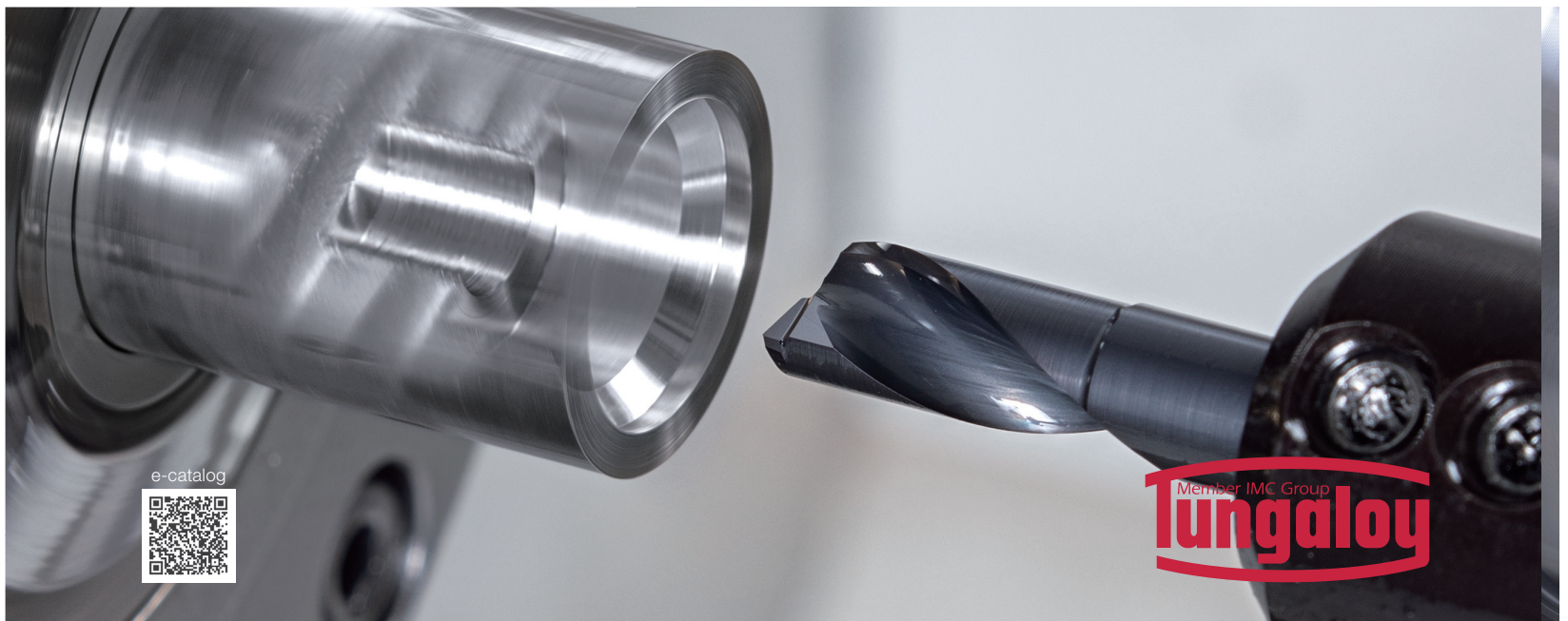
**Solid Carbide bars (Grade SH725):**  
TBMFR07...

**Sleeve:**

- JBBS16-7-L100C-4N
- JBBS19-7-L100C-4N
- JBBS20-7-L100C-4N
- JBBS22-7-L100C-4N
- JBBS254-7-L100C-4N
- JBBS25-7-L100C-4N

**TBMFR07...**

From drilling to internal, external,  
and face turning  
DC =  $\varnothing$ 3, 4, 5, 6, 7 mm



e-catalog



## MULTIFUNCTIONAL TOOLS FOR DRILLING AND TURNING

Reduced machine downtime thanks to eliminating the need for tool changes.

**BUY 10** inserts

AND

**GET 1** corresponding toolholder

**50 %**  
additional discount!

### Inserts (Grade AH725):

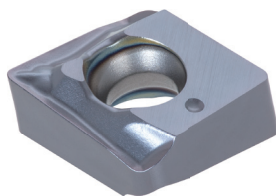
XCMT-PS (for DC =  $\varnothing 8$  mm)

XOMU-PS (for DC =  $\varnothing 10$  -  $\varnothing 32$  mm)

### Toolholder:

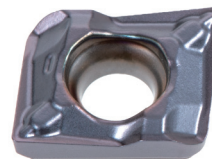
TBM

A-SXUOR/L



### XOMU-PS

Optimized chipbreaker design enables effective chip control in all applications



### XCMT-PS

Single-sided insert with 2 corners for multifunctional tools

e-catalog



# TETRA<sup>FORCE</sup>CUT

Valid from 1st January to 30th June, 2025



## INNOVATIVE GROOVING TOOLS WITH 4 CUTTING-EDGE INSERTS

The ground insert clamps securely into a unique insert pocket, ensuring high rigidity and repeatability. It is paired with high-productivity PVD grades such as AH7025, AH8005, and AH6235

**BUY 10** inserts

AND

**GET 1** corresponding toolholder

**60 %**  
additional  
discount!

**BUY 10** inserts

AND

**GET 1** corresponding CHP toolholder

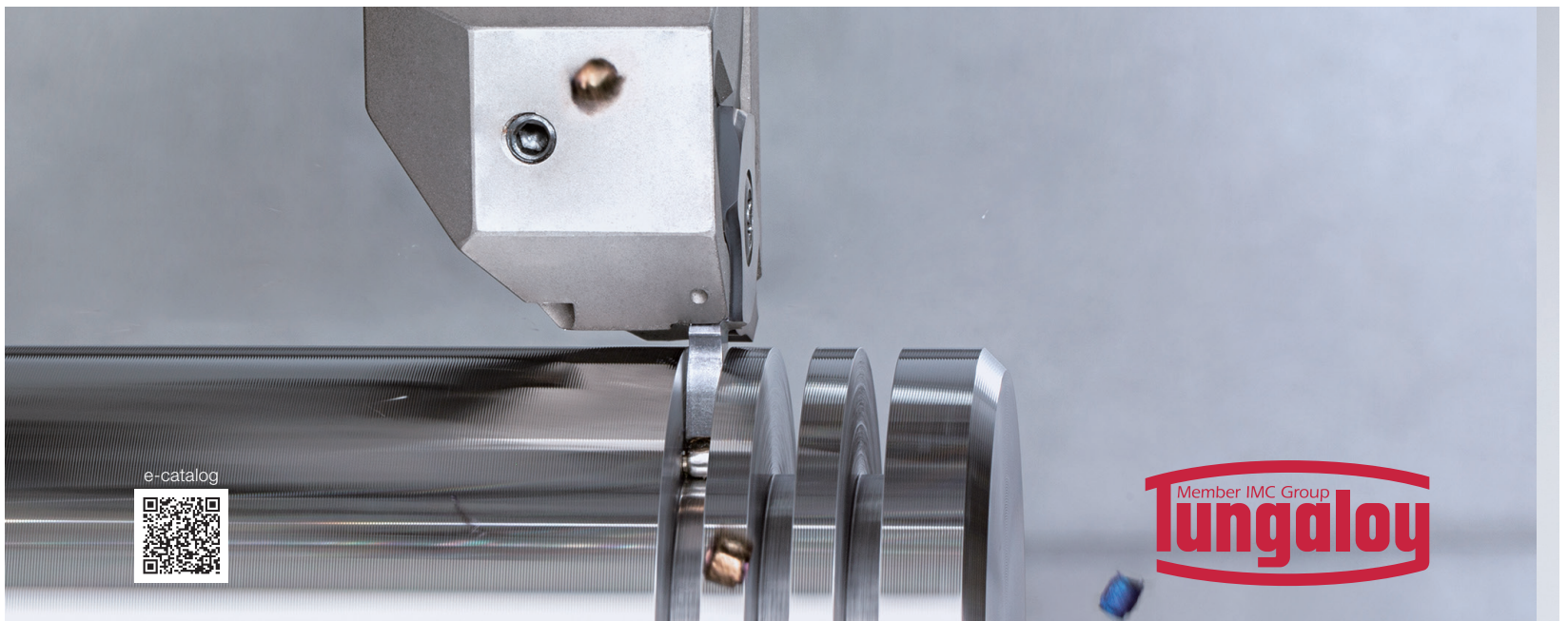
**40 %**  
additional  
discount!

Inserts (Grades AH7025, AH8005 and AH6235):

TCL27  
TCS27  
TCM27

Toolholder:

STCR/L  
STCR/L-CHP



e-catalog



# INNOVATIVE TURNING TOOL SERIES FOR CNC AUTOMATIC LATHES AND CAM-DRIVEN LATHES

Ideal for machining small parts of 12 mm or smaller diameters

**BUY 10** inserts

AND

**GET 1** toolholder

**FREE**  
of charge!

**Inserts (Grade SH7025/SH725):**

JVPN\*\*R/L (for Grooving and Parting-off)

CW = 0.5, 0.6, 0.8, 1 mm

JVFN45R/L (for Front Turning)

JVBN45/70 (Back Turning)

JVTN (Threading)

JVGN (Grooving)

CW = 0.5, 0.75, 0.95, 1.00, 1.50 mm

JVNR/L (Blank insert)

**Toolholder:**

0606, 0707, 0808, and 1010 type



**JVBN...**  
Back turning



**JVGN...**  
Grooving



**JVTN...**  
Threading



**JVPN...**  
Parting-off



**JVFN...**  
Front turning



**JVN...**  
Blank insert



video



e-catalog



# VERSATILE SHOULDER MILLING CUTTER WITH UNIQUE V-SHAPED INSERT BOTTOM FOR MAXIMUM PRODUCTIVITY

Unmatched stability across all materials, with an innovative clamping system

**BUY 10 inserts per pocket** AND **GET 1 Cutter** up to max 50 inserts

**FREE of charge!**

Limited up to diameter 125 mm

Inserts (Grades: AH3225, AH8015, AH120, T1215, T3225, KS05F):

AV\*\*T12

AV\*\*T18

**Cutter bodies:**

**Bore type:**

**TPAV12/18**

DCX =  $\varnothing 40 - \varnothing 125$  mm

**Shank type:**

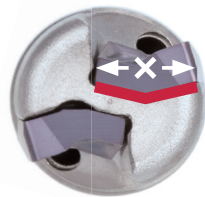
**EPAV12/18**

DCX =  $\varnothing 12 - \varnothing 63$  mm

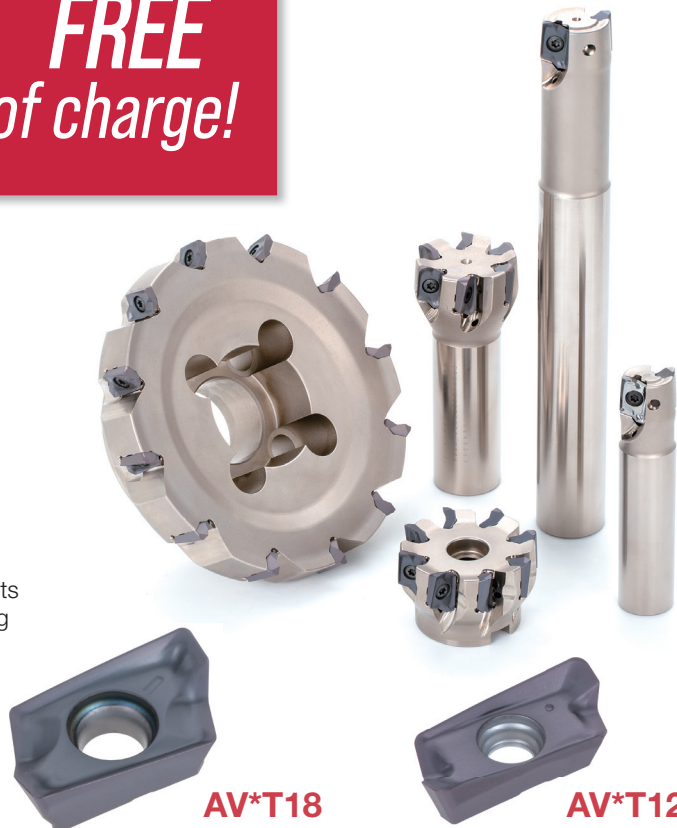
**Modular type:**

**HPAV12/18**

DCX =  $\varnothing 16 - \varnothing 40$  mm



V shape design prevents insert movement during machining.



**AV\*T18**

Max. depth of cut: 16.5 mm

**AV\*T12**

Max. depth of cut: 11.5 mm



e-catalog



## HIGH FEED MILLING CUTTERS WITH SIX CUTTING EDGE INSERTS

The cutter's small entry angle ensures smooth material access, perfect for long reach applications

**BUY** 10 inserts per  
**AND** pocket up to max 50 inserts  
**GET** 1 Cutter

**FREE**  
of charge!

Insert (Grades: AH3225, AH8015):

WXMU03

Cutter bodies:

Bore type:

TXWX03

DCX =  $\varnothing 40 - \varnothing 50$  mm

Shank type:

EXWX03...

DCX =  $\varnothing 16 - \varnothing 32$  mm

Modular type:

HXWX03

DCX =  $\varnothing 16 - \varnothing 32$  mm



WXMU03-MM

Double-sided,  
6-edged insert  
APMX = 1 mm



video



e-catalog



## MORE THAN 13,000 POSSIBLE COMBINATIONS

Easy and accurate head-holder coupling provides reduced tool change time and high accuracy of cutting point repeatability

**BUY 6 heads**

AND

**GET 1** Steel or Carbide shank

**60 %**  
*additional discount!*

**Heads (Grade: AH715, AH725, AH750, GH730, KS15F):**

Square heads: **VEH, VEE, VED**

Face mills: **VFM**

High-feed: **VFX**

Ball: **VBB, VBD, VBE**

Radius: **VRB, VRC, VRD**

Barrel: **VBO**

Bull nose: **VBN**

Lens: **VBL**

Chamfering: **VCA, VCW, VCR**

Chamfering and spot drill: **VCP, VDS**

Center drill: **VDP**

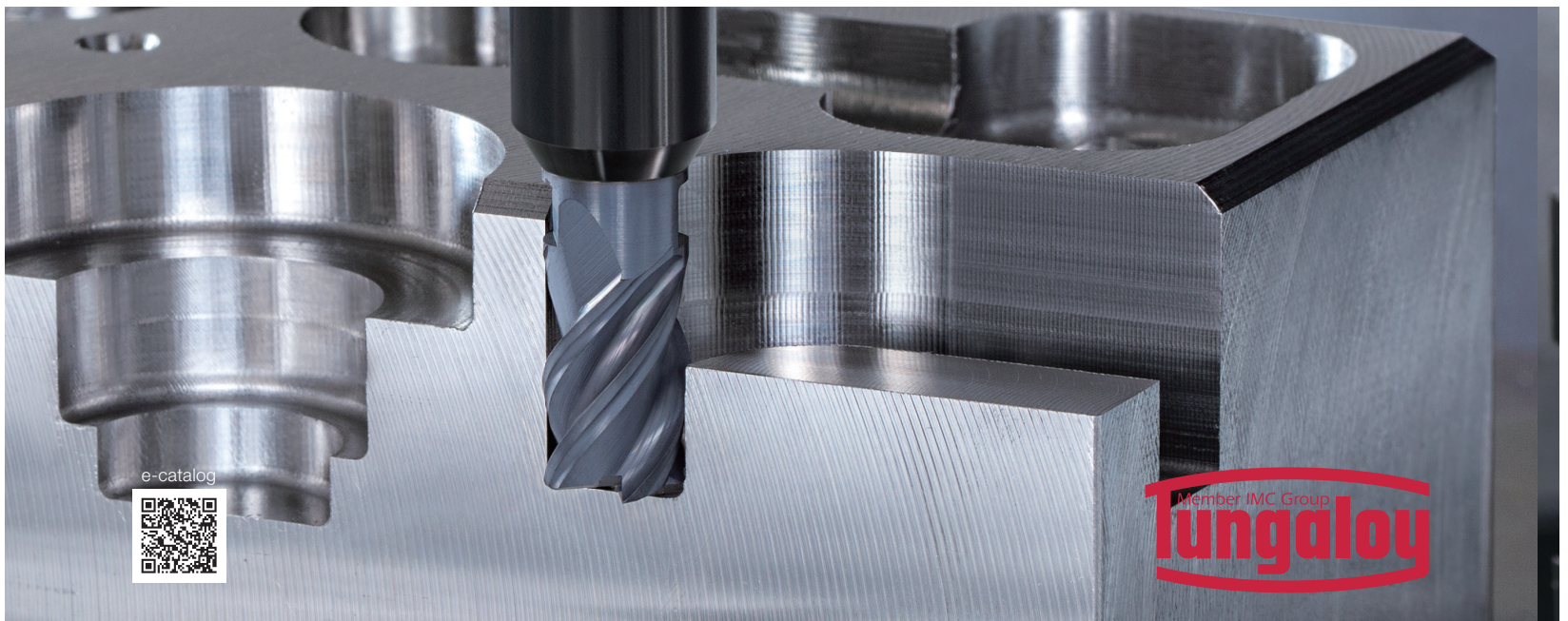
Counterboring: **VGC**

Slotting: **VST, VTB**

Threading: **VMT, VTR**

**Shanks:**

Steel, Carbide, ER collet type



e-catalog



Member JMC Group  
**Tungaloy**



## HEAD-CHANGEABLE DRILL FOR DRILLING LARGE HOLES

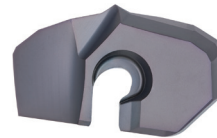
Unique clamping concept and two effective cutting edges on the drill head provide excellent hole quality and high productivity

**BUY** 4 drill heads

AND

**GET** 1 drill body  
up to 3xD

**50 %  
additional  
discount!**



**SMC**

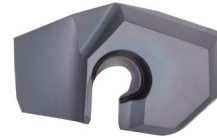
Drill dia.:  
ø26 - ø33 mm  
High precision drilling  
head with self-  
centering chisel edge

**BUY** 6 drill heads

AND

**GET** 1 drill body  
up to 5xD

**50 %  
additional  
discount!**



**SMP**

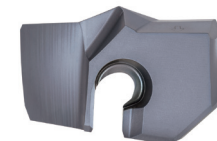
Drill dia.:  
ø20 - ø41 mm  
General purpose drilling  
head ideal for various  
drilling applications

**BUY** 8 drill heads

AND

**GET** 1 drill body  
up to 8xD

**50 %  
additional  
discount!**



**SMF**

Drill dia.:  
ø20 - ø41 mm  
For efficient drilling of  
flat-bottom holes

Drill heads (Grades: AH9130, AH725):  
SMC, SMP, SMF

Drill bodies:  
TIS (3xD, 5xD, 8xD)



e-catalog



Member IMC Group  
**Tungaloy**

# N-Swiss JOINT ISO inserts

Valid from 1st January to 30th June, 2025

**NTK**  
TURNING & MINIATURE

## QUICK-CHANGE MODULAR TURNING HEADS FOR SWISS MACHINES

Reduce machine downtime and increase productivity with faster tool changes.

**BUY** 1 modular head &  
10 ISO inserts

AND

**GET** 1 Corresponding  
N-Swiss shank

**FREE**  
*of charge!*

**BUY** 1 modular head &  
10 ISO inserts

AND

**GET** 1 Corresponding  
N-Swiss head

**50 %**  
*additional discount!*

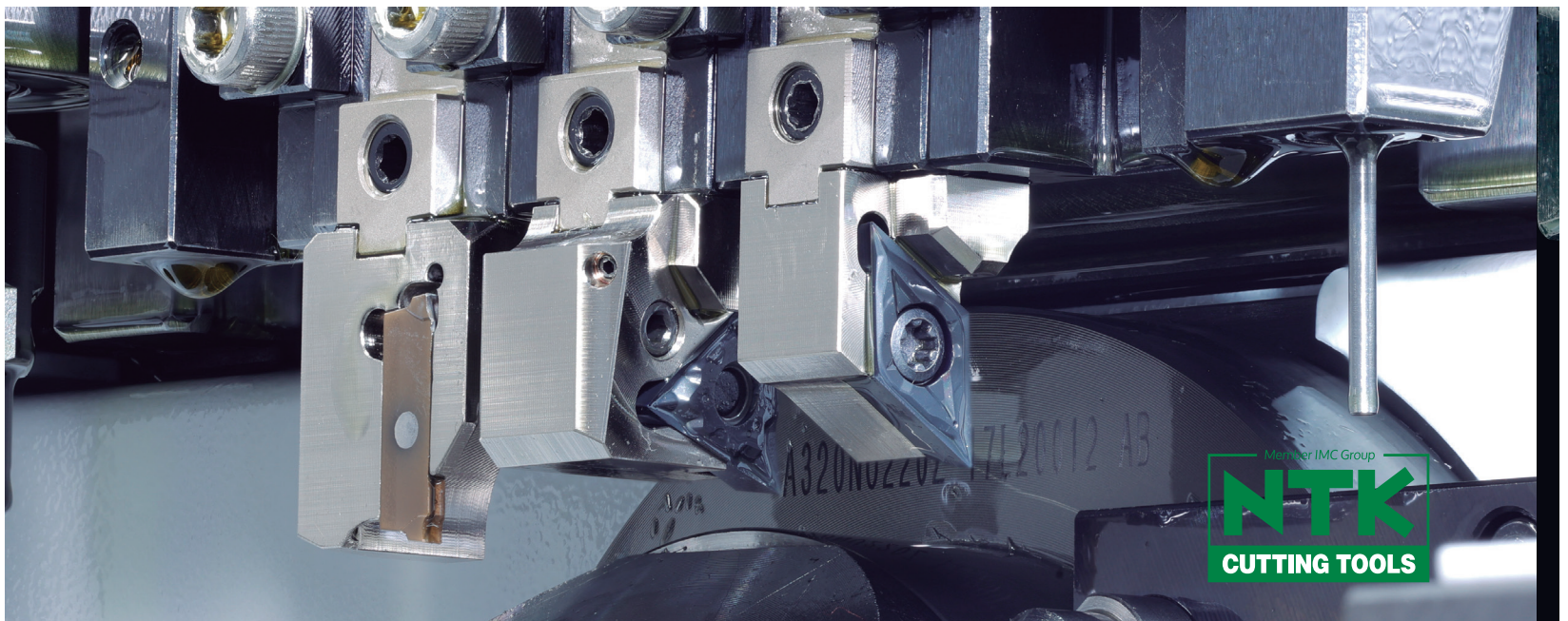
Inserts (Grades NTK650, ST4, DM4, DT4, TM4, QM3, ZM3, VM1):  
DCGT, CCGT, VCGT, TNGG

### N-Swiss Heads:

QC12-SCLCR09-F02-OH  
QC12-SDJCR11-F02-OH  
QC12-SVJCR11-F02-OH  
QC12-PTXNR16-OH

### Tool holder (Shank):

QC-1212F-OH  
QC-1212X-OH2  
QC-1216F-F15-OH  
QC-1216X-F15-OH2  
QC-1616X-OH2



Member IMC Group  
**NTK**  
CUTTING TOOLS

# N-Swiss JOINT NON-ISO inserts

Valid from 1st January to 30th June, 2025

**NTK**  
TURNING & MINIATURE

**BUY** 1 modular head &  
10 inserts

AND

**GET** 1 Corresponding  
N-Swiss shank

**FREE**  
*of charge!*

**BUY** 1 modular head &  
10 inserts

AND

**GET** 1 Corresponding  
N-Swiss head

**50 %**  
*additional  
discount!*

#### N-Swiss Heads:

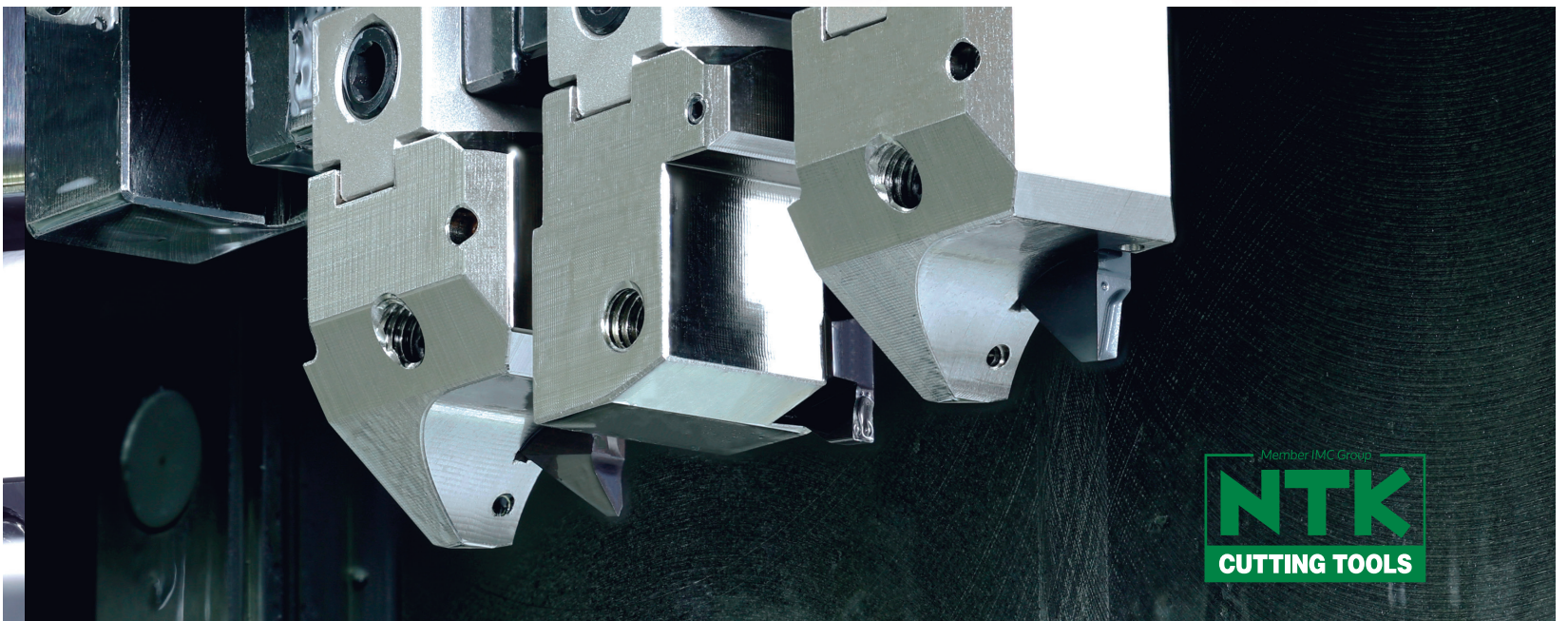
QC12-GTTR00-OH  
QC12-TBPR-OH  
QC12-TTPR-OH  
QC12-CTPR/L-OH  
QC12-CTPR/L-SUB-OH  
QC12-CTDPR/L-20D20-OH  
QC16-CTDPR/L-20D32-OH

#### Tool holder (Shank):

QC-1212F-OH  
QC-1212X-OH2  
QC-1216F-F15-OH  
QC-1216X-F15-OH2  
QC-1616X-OH2

#### Inserts (Grades NTK650, ST4, DM4, DT4, TM4, QM3, ZM3, VM1):

GTMH32 for grooving CW = 0.3 - 3.0 mm  
TBP72 /TBP60 for Back turning  
TTP55/TTP60 for Threading  
CTP for Cut off CW = 0.5 - 2.0 mm  
CTDP for Cut off CW = 2.0, 2.5 mm



Member JMC Group  
**NTK**  
CUTTING TOOLS

# NTK650 ISO inserts

Valid from 1st January to 30th June, 2025

# NTK

TURNING & MINIATURE

## OUTSTANDING PRODUCTIVE PVD GRADE FOR VARIOUS MATERIAL GROUPS AND APPLICATIONS

Latest HiPIMS coating technology for Improvement of surface-smoothness and suppression of imperfections in film

**BUY 20 ISO inserts**

AND

**GET 10** Corresponding inserts

**FREE**  
*of charge!*

**BUY 20 ISO inserts**

AND

**GET 1** Corresponding N-Swiss head

**50 %**  
*additional discount!*

### Inserts (Grades NTK650):

DCGT

CCGT

VCGT

TNGG

TPGT11 for ID boring

(N-Swiss head not available for TPGT11)

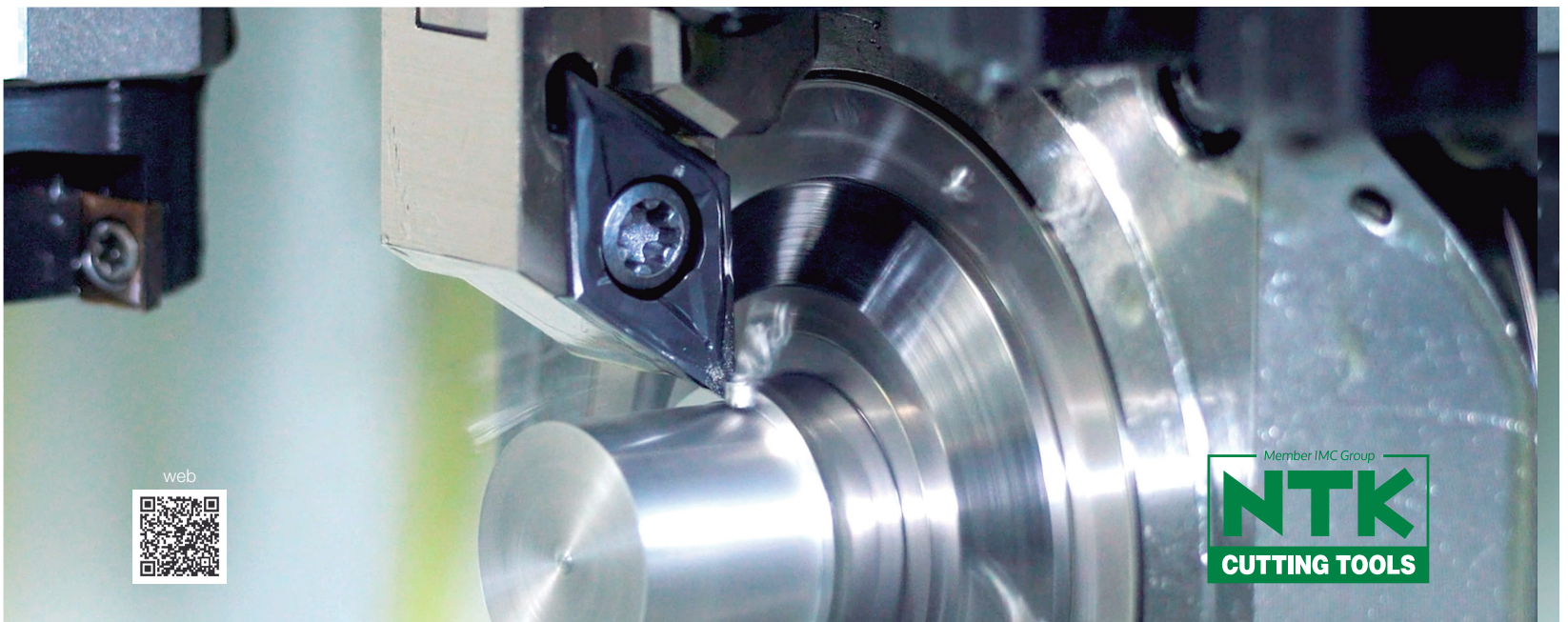
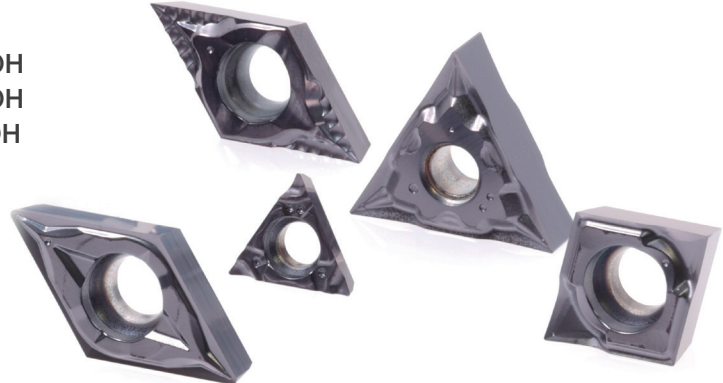
### N-Swiss Heads:

QC12-SCLCR09-F02-OH

QC12-SDJCR11-F02-OH

QC12-SVJCR11-F02-OH

QC12-PTXNR16-OH



web



# NTK650 NON-ISO inserts

Valid from 1st January to 30th June, 2025

**NTK**  
TURNING & MINIATURE

**BUY 20** inserts

AND

**GET 1** Corresponding toolholder

**FREE**  
*of charge!*

**BUY 20** inserts

AND

**GET 1** Corresponding CHP toolholder

**50 %**  
*additional discount!*

**BUY 20** inserts

AND

**GET 1** Corresponding N-Swiss head

**50 %**  
*additional discount!*

#### Inserts (Grades NTK650):

TBP72 for Back turning

CTP for Cut off

CW = 1.0 - 2.0 mm

GTMH32 for grooving

CW = 0.5 - 3.0 mm

TTP60 for Threading

#### N-Swiss Heads:

QC12-GTTR00-OH

QC12-TBPR-OH

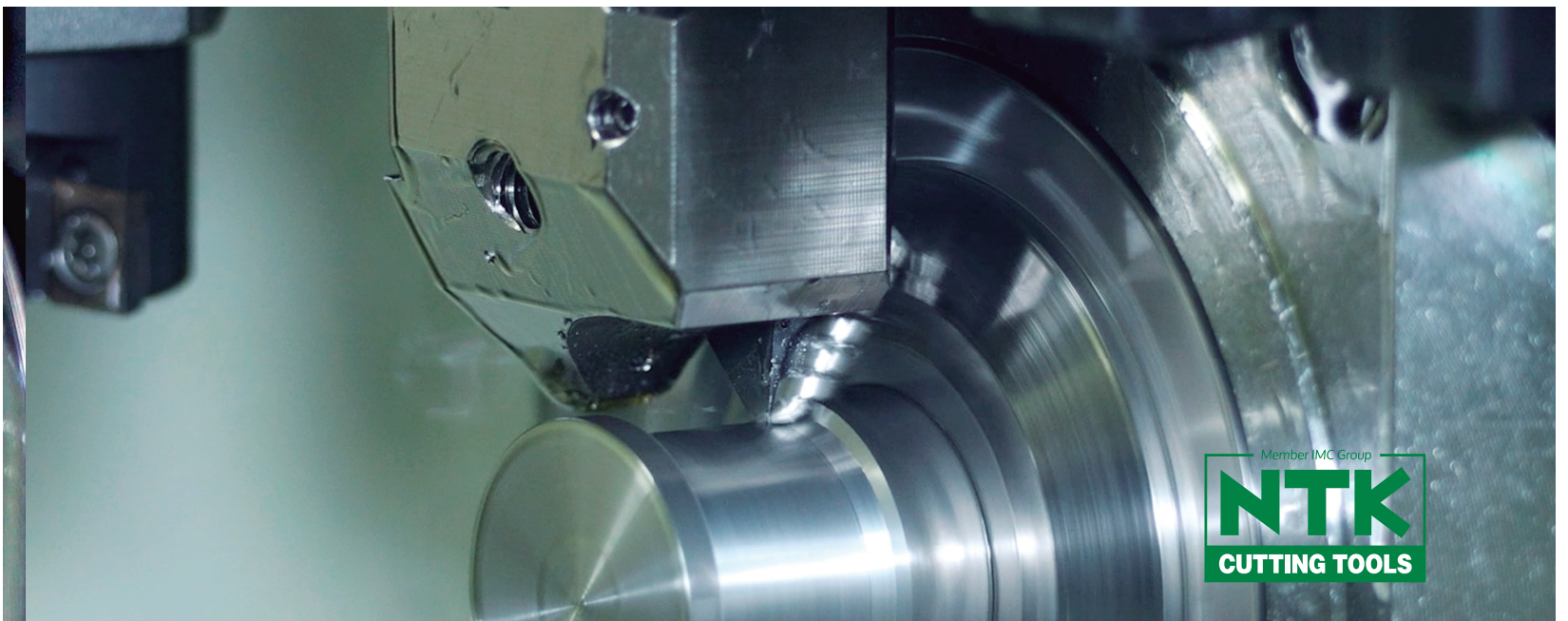
QC12-TTPR-OH

QC12-CTPR/L-OH

QC12-CTPR/L-SUB-OH

QC12-CTDPR/L-20D20-OH

QC16-CTDPR/L-20D32-OH



Member IMC Group  
**NTK**  
CUTTING TOOLS

# TMV chipbreaker

Valid from 1st January to 30th June, 2025

# NTK

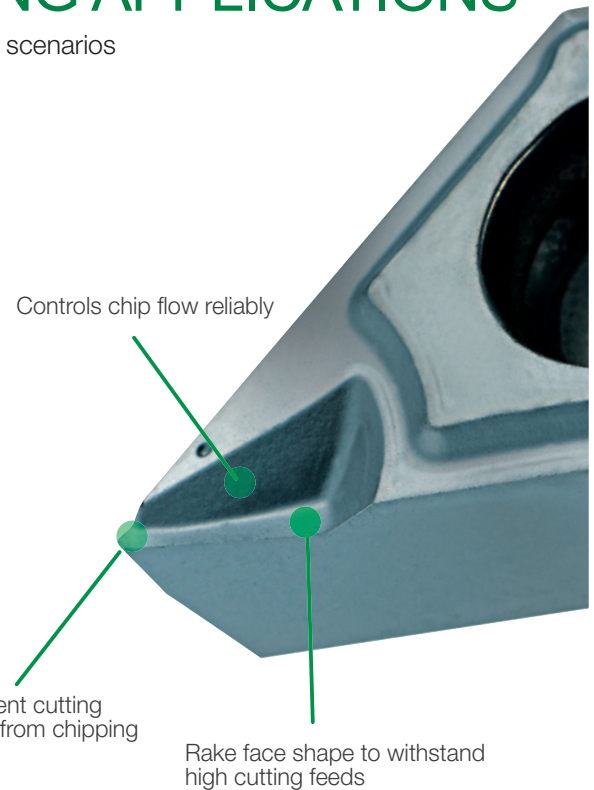
## TURNING & MINIATURE

## OUTSTANDING CHIPBREAKER FOR VIBRATION AND NON-VIBRATION MACHINING APPLICATIONS

Ensures long tool life and stable chip evacuation even in the most challenging scenarios

**BUY 20 ISO inserts**  
AND  
**GET 10** Corresponding inserts  
**FREE of charge!**

**BUY 20 ISO inserts**  
AND  
**GET 1** Corresponding N-Swiss head  
**50 % additional discount!**

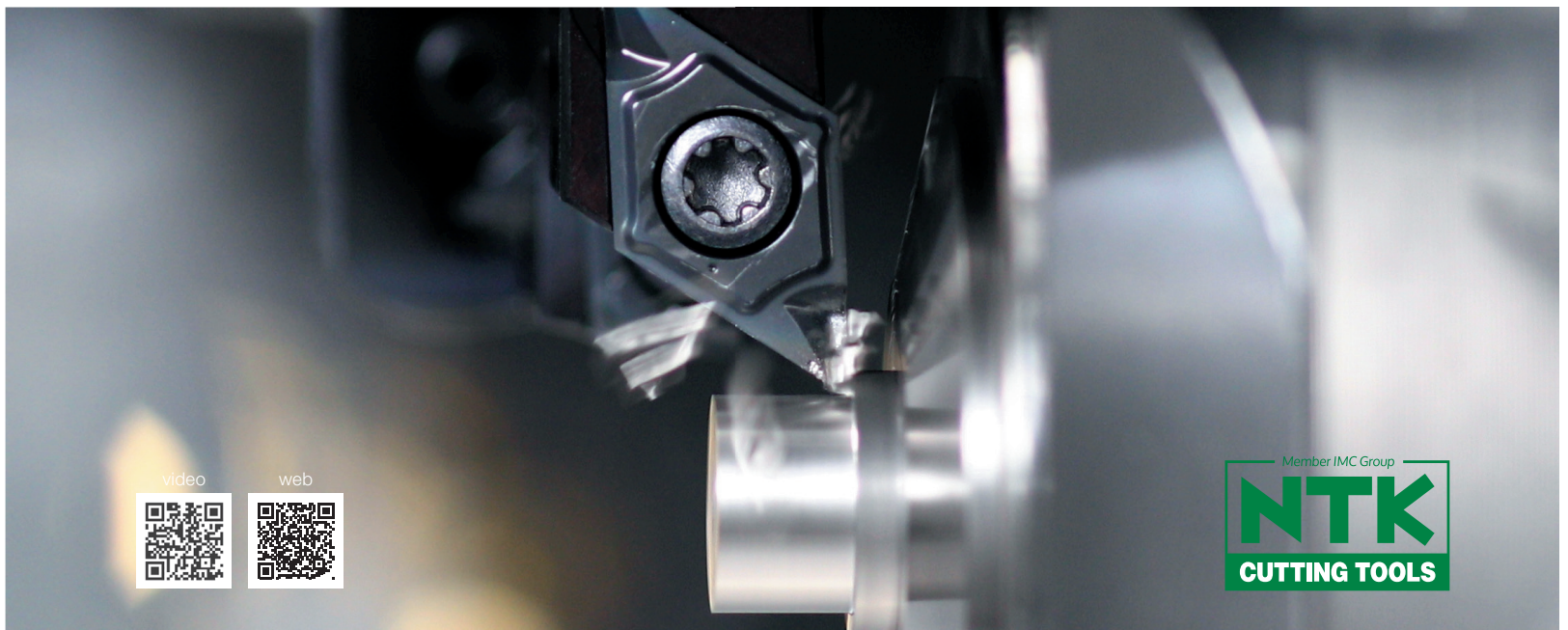
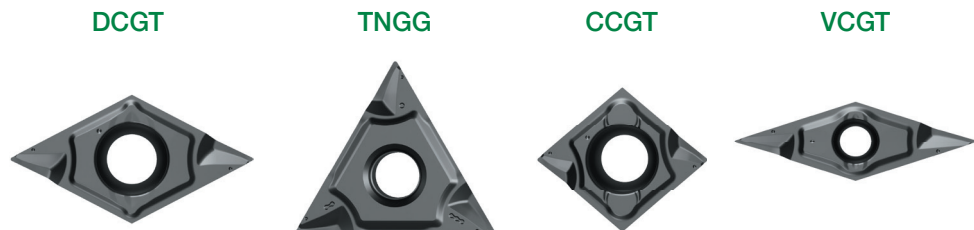


Inserts (Grades NTK650, ST4, DM4, TM4):

- DCGT
- TNGG
- CCGT
- VCGT

N-Swiss Heads:

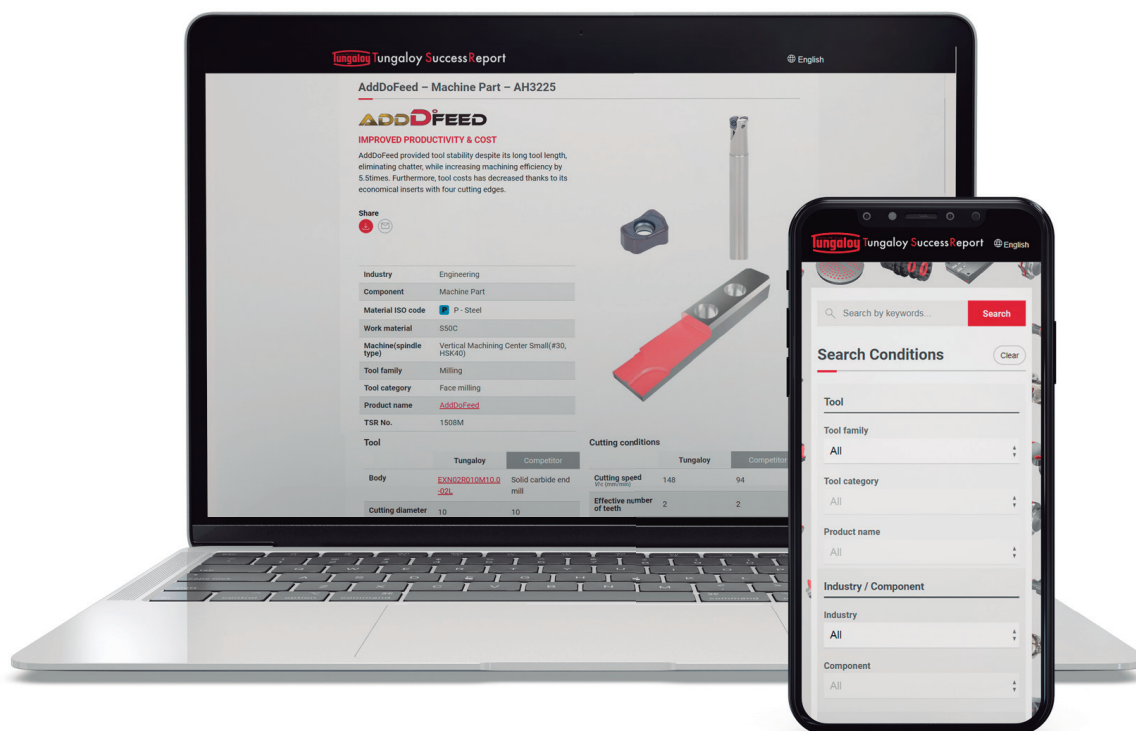
- QC12-SCLCR09-F02-OH
- QC12-SDJCR11-F02-OH
- QC12-SVJCR11-F02-OH
- QC12-PTXNR16-OH



# YOUR GATEWAY TO TUNGALOY & NTK SUCCESS REPORTS!

We invite you to visit the updated TSR platform and discover how Tungaloy and NTK's products have successfully met diverse challenges and delivered outstanding results. These reports can provide insights and inspiration for your own applications and projects, offering detailed solutions to succeed in various industrial fields.

Find applications that fit your current needs, elevate your productivity, and solve your production bottlenecks.



[tsr.tungaloy.com](https://tsr.tungaloy.com)



11-1 Yoshima Kogyodanchi  
Iwaki 970-1144 Japan  
[tungaloy.com](http://tungaloy.com)




2808 Iwazaki Komaki-City,  
Aichi 485-8510, Japan  
[ntkcuttingtools.com](http://ntkcuttingtools.com)

# Leading in Innovation

Distributed by:



 **FIND US ON THE CLOUD!**  
[machiningcloud.com](http://machiningcloud.com)

Dec. 2024 (TJ)